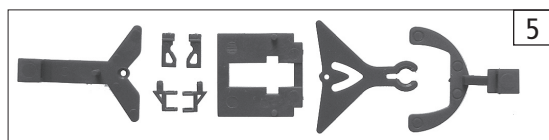
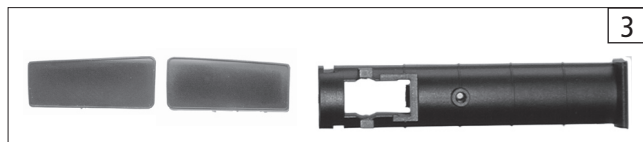
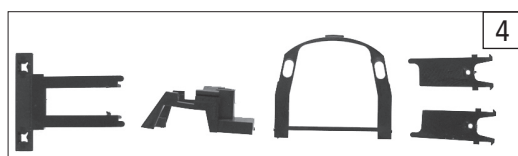
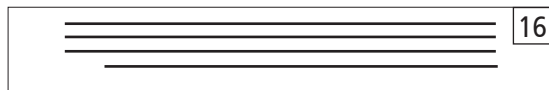
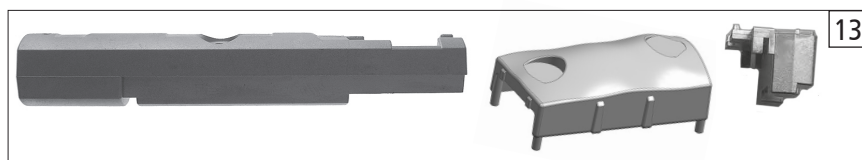


10

8

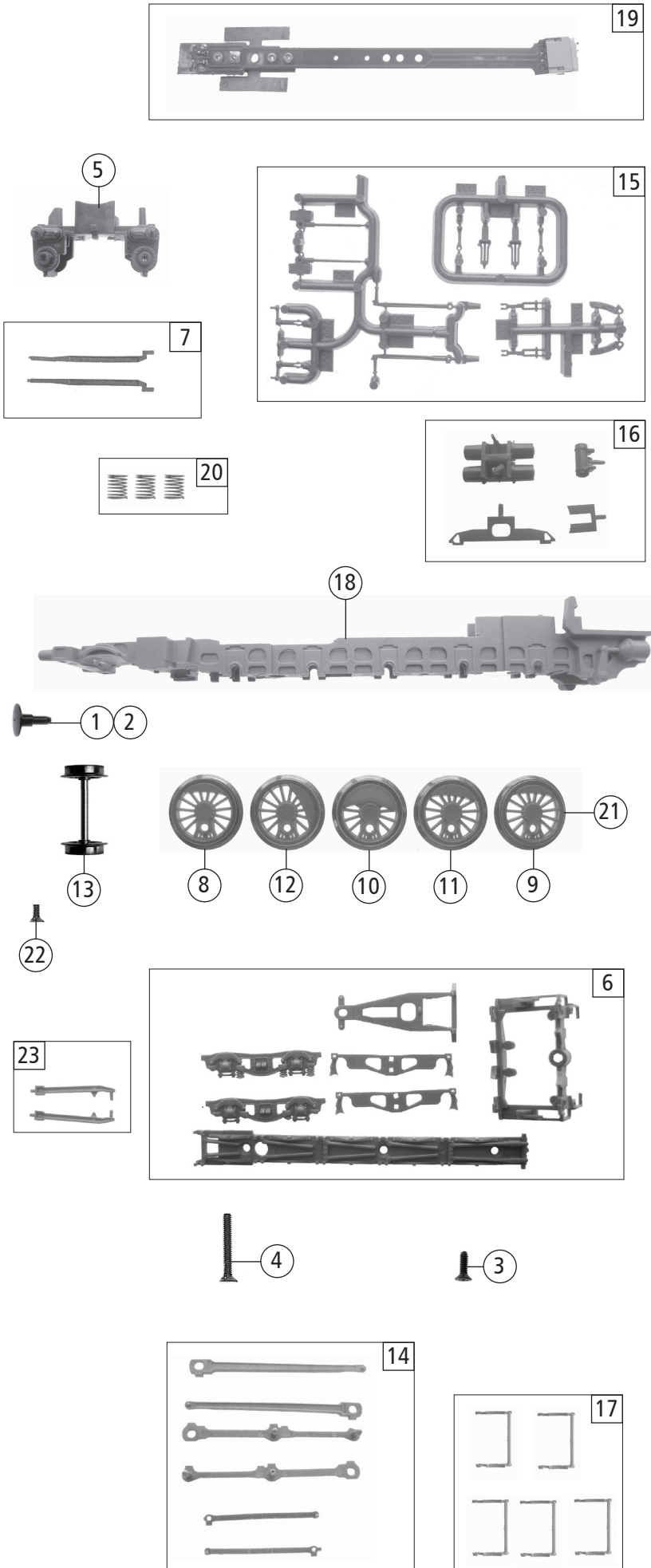


1

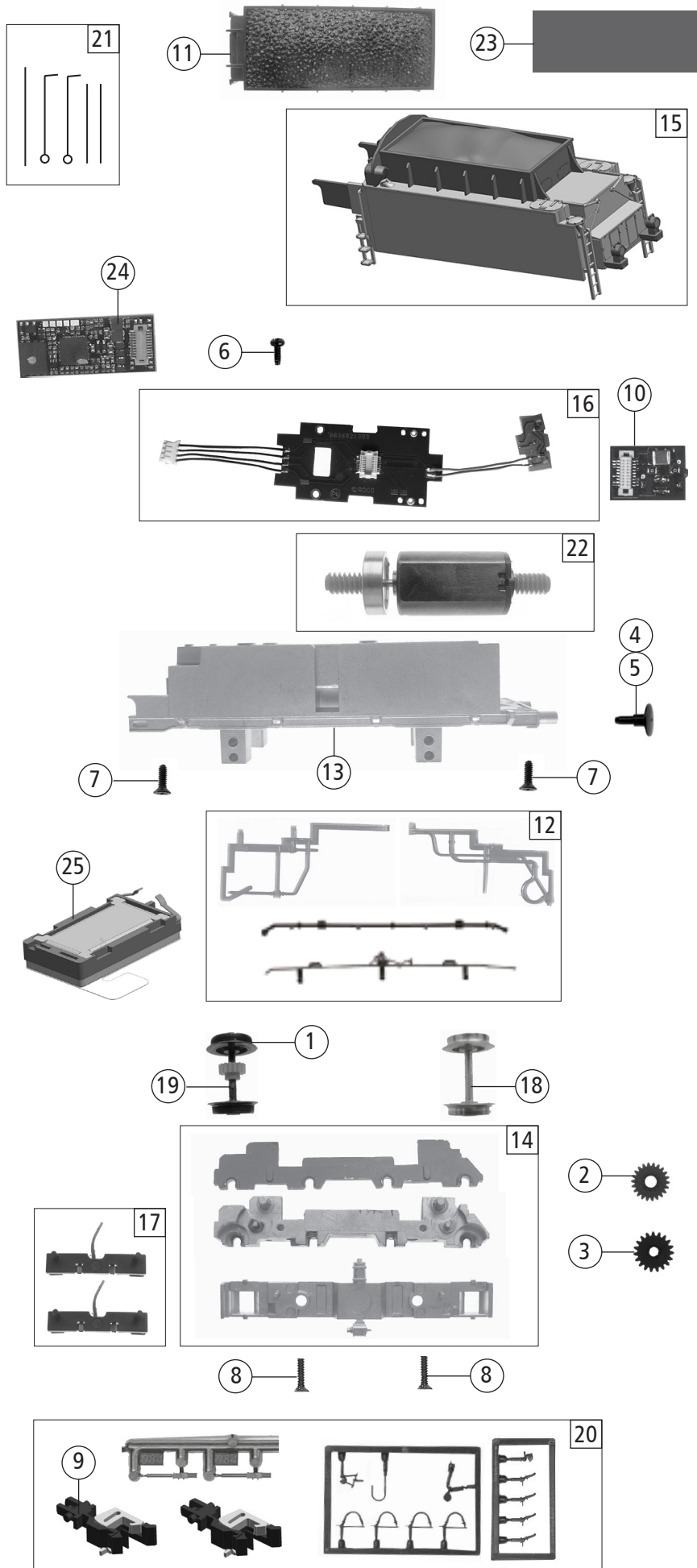


Pos. Nr. Pos.no.	Beschreibung Description	Art.-Nr. Art.no.	Preisgruppe Price bracket
1	Zugfeder Draw spring	86208	3
2	GF-Schraube M2x5 mm Self-tapping screw M2x5 mm	114966	3
3	TS-Windleitbleche, Kesselbod. Part set smoke deflector,boiler bottom	126577	12
4	TS-Tendertür, Stütze, FH-Rückwand Part set tender door,control cab rear wall	126580	12
5	TS-Kupplungsdeichseln+Stützen Part set coupling reception and support	126583	13
6	TS-Fenster,Lichtleiter,Linse Part set window,light conductor,lens	126584	13
7	TS-Kessel Part set boiler	141131	9
8	Rückfahrblende Back light assy	141119	7
9	TS - Lampen, Pumpen Part set lamps,pumps	126593	10
10	Loknummertafel Betr.nr. 44 1225-0 Loco number board loco no 44 1225-0	141128	8
11	TS-Leiter,Schaltstange Part set ladder, control rod	126596	10
12	Umlauf lackiert Running board painted	141129	13
13	TS-Lok + Tendergewichte Part set loco and tender ballast	141118	12
14	Kessel kpl. Boiler complete	141127	34
15	Führerhaus Driver's cab	141130	17
16	TS-Drahtstangen Part set thread rod	126629	10

Änderungen in Konstruktion und Ausführung vorbehalten
We reserve the right to change the construction and specification



Pos. Nr. Pos.no.	Beschreibung Description	Art.-Nr. Art.no.	Preisgruppe Price bracket
36023	DR BR 44	=	
36024		=	🔊
1	Puffer rund flach Buffer round flat	107658	5
2	Puffer rund gewölbt Buffer round curved	107659	5
3	SK-Schraube M1,6x5 SK-Screw M1,6x5	115317	4
4	SK-Schraube M1,6x16/6 SK-Screw M1,6x16/6	123585	3
5	Zylinderblock lackiert Cylinder block painted	129029	10
6	TS-Vorlaufgestell, Lokboden, Steuerrahmen Part set bogie frame, loc.chassis, control frame	126581	13
7	Kreuzkopfführung links+rechts Cross-head guidance	139723	9
8	Kuppelradsatz kleines Gewicht Coupled wheelset small weight	126587	11
9	Radsatz kleines Gewicht Wheelset small weight	126588	12
10	Treibradsatz grosses Gewicht Driving wheelset big weight	126589	11
11	Kuppelradsatz mittleres Gewicht Coupled wheelset middle weight	126590	11
12	Kuppelradsatz m.mittl.versetztem Gewicht Coupled wheelset w.middle shifted weight	126591	12
13	Vorlaufradsatz Pony truck wheelset	126592	9
14	TS-Kuppelstangen Part set coupling rods	139724	15
15	TS-Steuerung Parts set reversing gear	139722	10
16	TS-Luftkessel, Stützteile Part set of air tank, support parts	126599	6
17	Bremsbackensatz Brake shoes set	126600	7
18	Lokgrundrahmen Loco basic frame	141116	16
19	Lokplatine kpl.m. LED Printed circuit board complete for loco w.LED	126607	27
20	TS-Federn Part set springs	126616	9
21	Haftringsatz 10Stk. Set w. traction tyres 10pieces	129040	10
22	SK-Schraube M1,6x3 mm SK-Screw M1,6x3 mm	125023	3
23	TS-Steuerungsträger Part set of reversing gear bearing	126831	9



Pos. Nr. Pos.no.	Beschreibung Description	Art.-Nr. Art.no.	Preisgruppe Price bracket
36023	DR BR 44	=	
36024		=	🔊
1	Hafringsatz 10Stk. 7,8mm Set with traction tyres 10pieces 7,8mm	85617	10
2	Schneckenzahnrad Z=22/12 M=0,3 Worm gear wheel Z=22/12 M=0,3	86482	4
3	Zahnrad Z=19 Gear wheel Z=19	86499	3
4	Puffer rund flach Buffer round flat	107658	5
5	Puffer rund gewölbt Buffer round curved	107659	5
6	GF-Schraube M1,6x4 mm Self-tapping screw M1,6x4 mm	114850	3
7	SK-Schraube M1,6x5 SK-Screw M1,6x5	115317	4
8	Schraube M2x8 mm Screw M2x8 mm	120189	3
9	Profi Kupplung Profi coupling	131014	8
10	Brückenstecker Connector	141134	19
11	Kohletender Oberteil Coal tender upper part	141117	9
12	TS-Tender-Führerhausleitungen Part set for tender and wires for driver's cab	126595	6
13	Tendergrundrahmen Tender basic frame	141126	12
14	Getriebesatz 3-teilig Gear set 3-parts	126603	11
15	Tendergehäuse kpl. Tender body complete	141120	13
16	Tenderplatine kpl. Printed circuit board assembly for tender	141125	25
17	Tenderkontakthalter kpl.mit Litzen Tender contact support complete w.leads	126621	8
18	Tenderradsatz o. Haftring o. Zahnrad Tender wheelset w/o gear w/o traction tyres	126623	10
19	Tenderradsatz m. Haftring m. Zahnrad Tender wheelset w.gear wheel w.traction tyres	126624	12
20	Zurüstbeutel Bag with accessories	126630	10
21	TS - Tendergriffstangen+Federn Part set tender handles and springs	126631	10
22	Motor Motor	126622	28
23	Schaumstoff für Schalldämmung Anti-noise foam material	126838	4
Sound			
24	Sounddecoder Sound-decoder	141133	39
25	Lautsprecher Loudspeaker	138915	16